

Addendum to JOINT PUBLIC NOTICE

May 20, 2019

United States Army
Corps of Engineers
New Orleans District
Regulatory Branch, Room 280
7400 Leake Avenue
New Orleans, Louisiana 70118

(504) 862-1564

Stephanie.L.Castaing@usace.army.mil

Project Manager
Stephanie Castaing
Permit Application Number
MVN-2018-00215-EPP

State of Louisiana
Department of Environmental Quality
ATTN: Water Quality Certifications
Post Office Box 4313
Baton Rouge, Louisiana 70821-4313

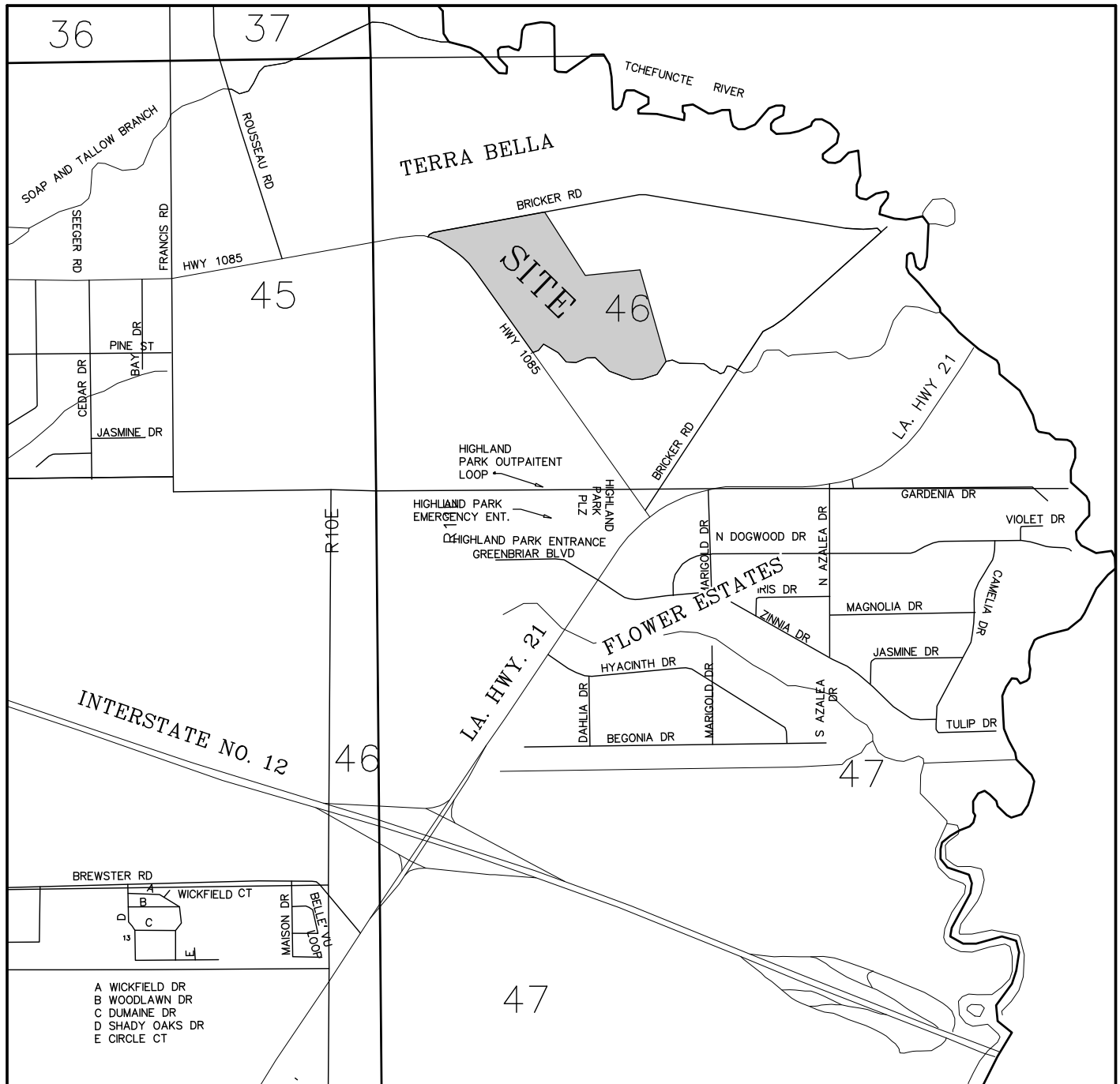
(225) 219-3225

Project Manager
Elizabeth Hill
WQC Application Number
WQC 180314-01

Public Notice, MVN-2018-00215, dated March 19, 2018, described work proposed by All State Financial Company. The project proposes a multi-purpose development –Timber Branch II, located on Louisiana Highway 1085 and Bricker Road, in Covington, Louisiana, in St. Tammany Parish.

The purpose of this addendum is to inform interested parties that the previous detention pond design has been modified. The revised pond is now designed to be a dry retention pond, with a greater capacity, to address drainage concerns. The revised project decreased wetland impacts from 24.68 acres to 24.58 acres.

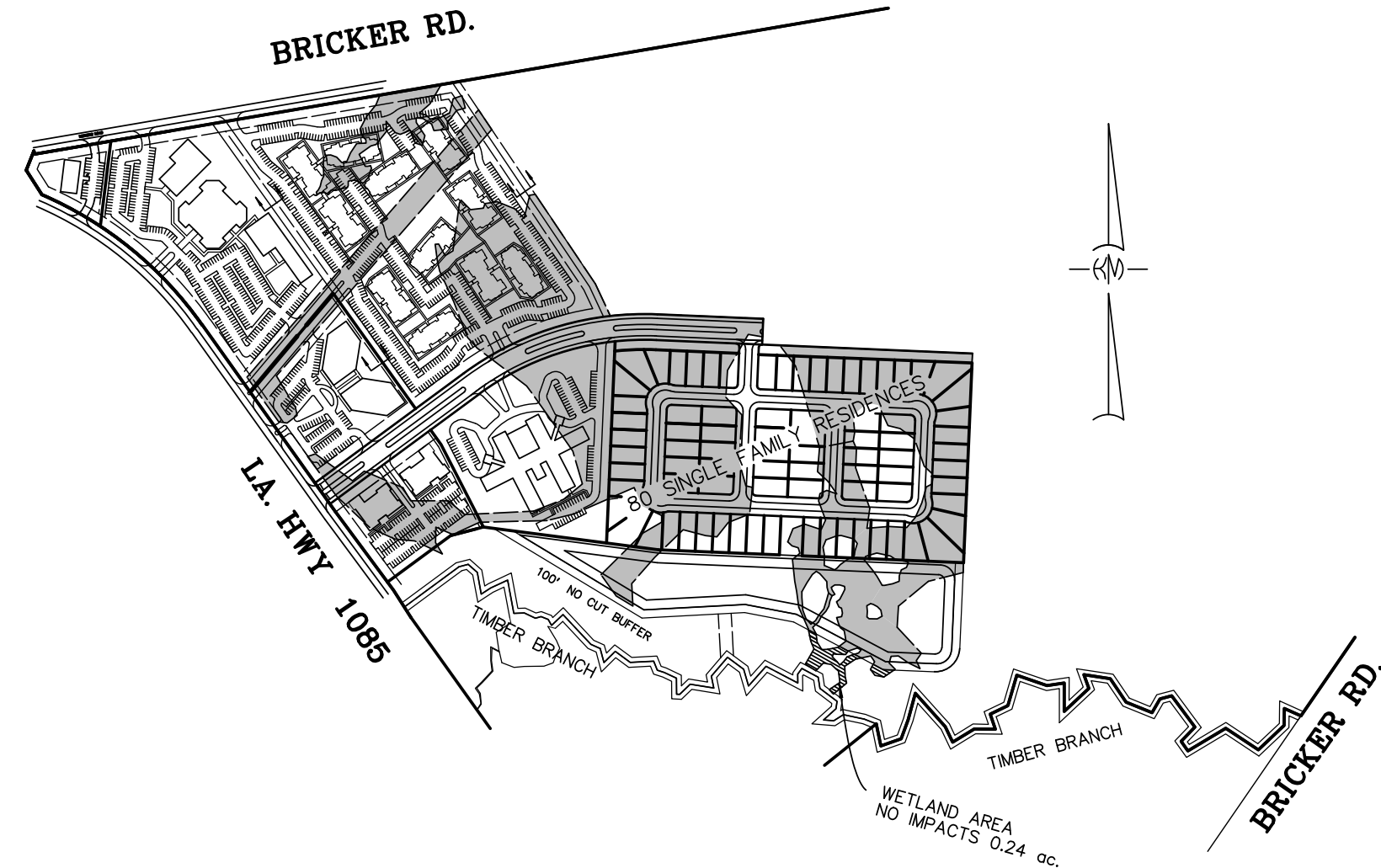
Michael V. Farabee
Chief, Eastern Evaluation Section



VICINITY MAP

TIMBER BRANCH II
ST. TAMMANY PARISH, LA.

SCALE:	N.T.S.	DATE:	02-06-18
DRAWN:	DRJ	JOB NO.:	16-025
REVISED:			

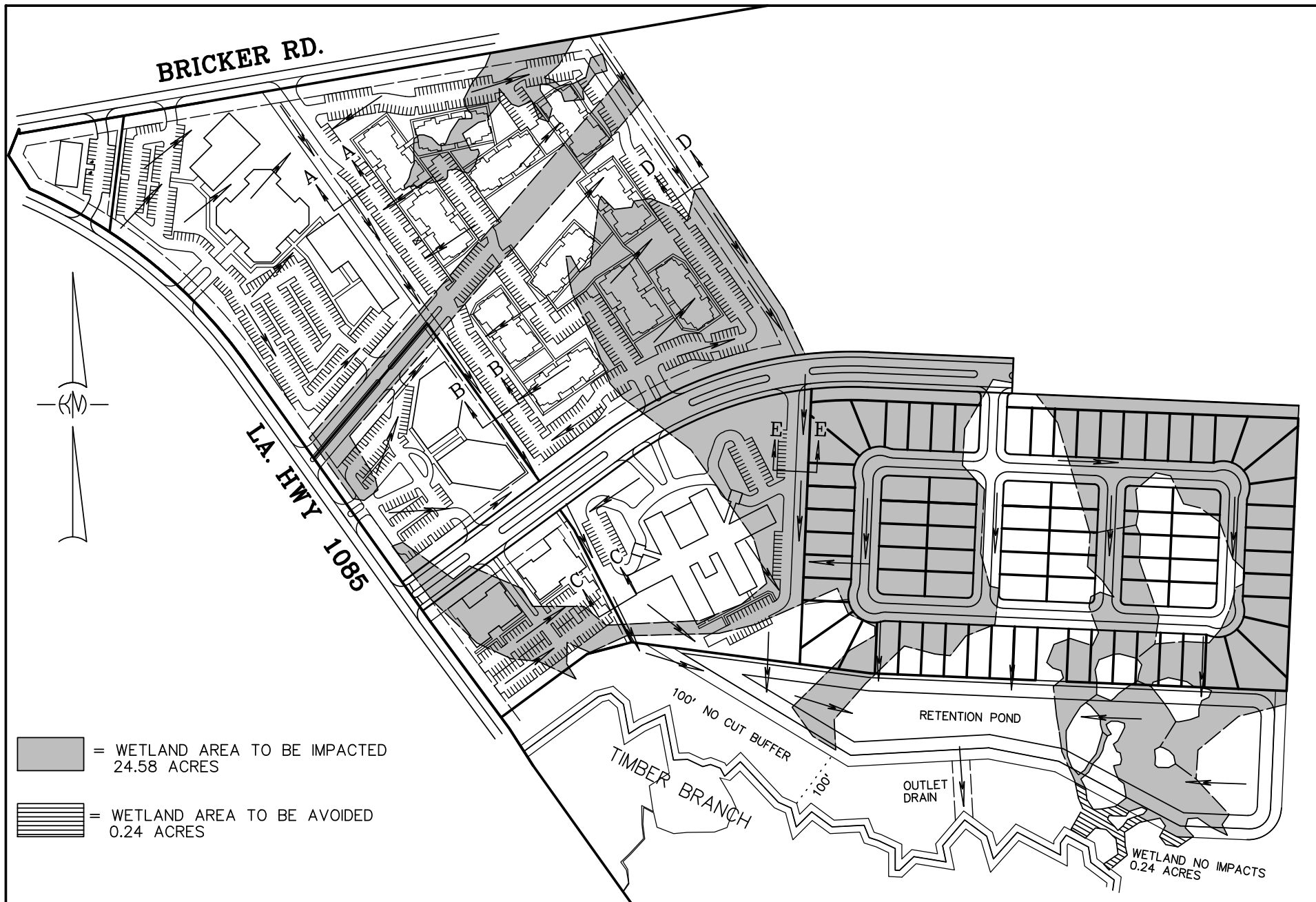


 = WETLAND AREA TO BE IMPACTED
24.58 ACRES

TIMBER BRANCH II,
SECTION 46, T-7-S, R-11-E
ST. TAMMANY PARISH, LA.

MASTER PLAN

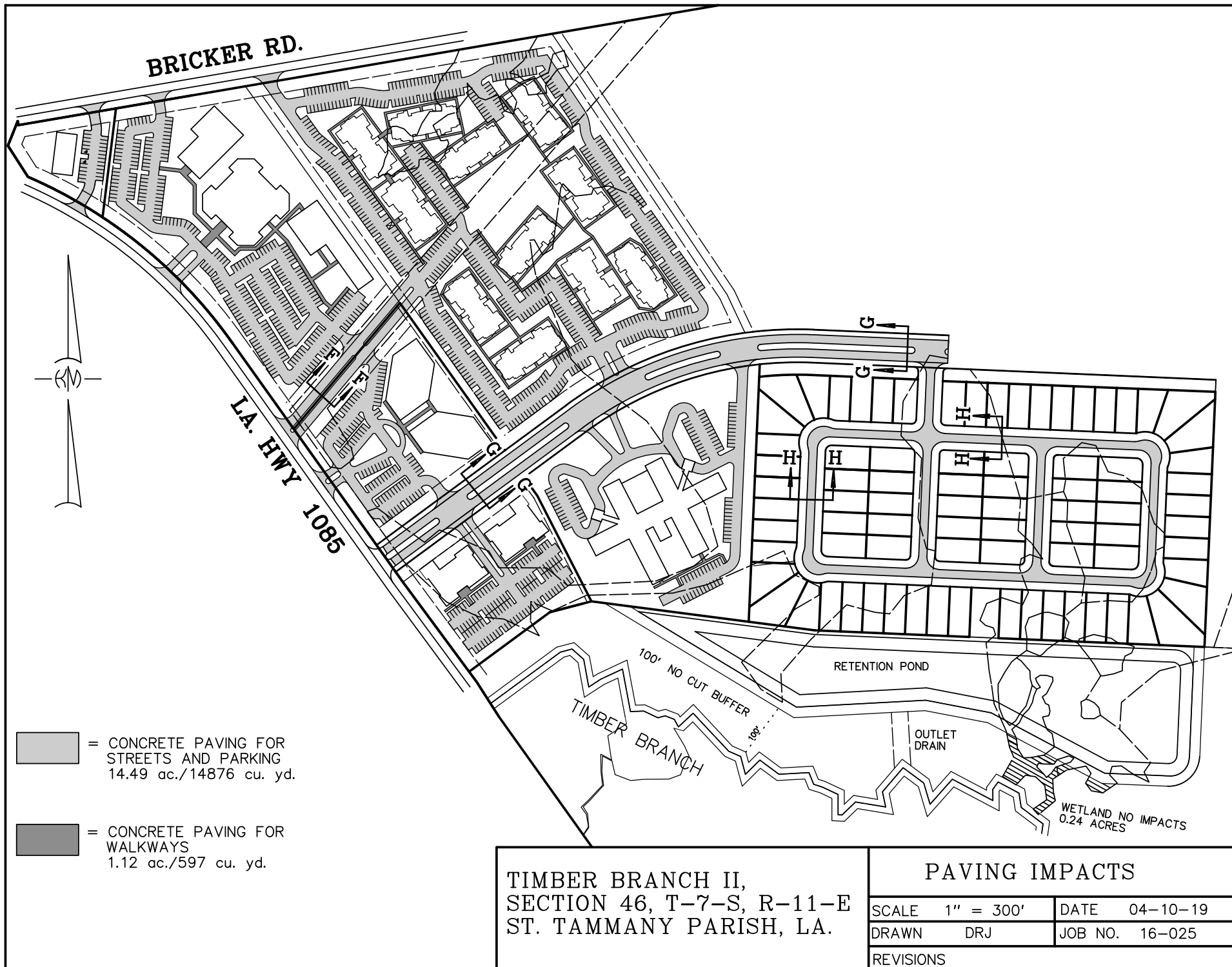
SCALE 1" = 500'	DATE 04-10-19
DRAWN DRJ	JOB NO. 16-025
REVISIONS 05-02-19	

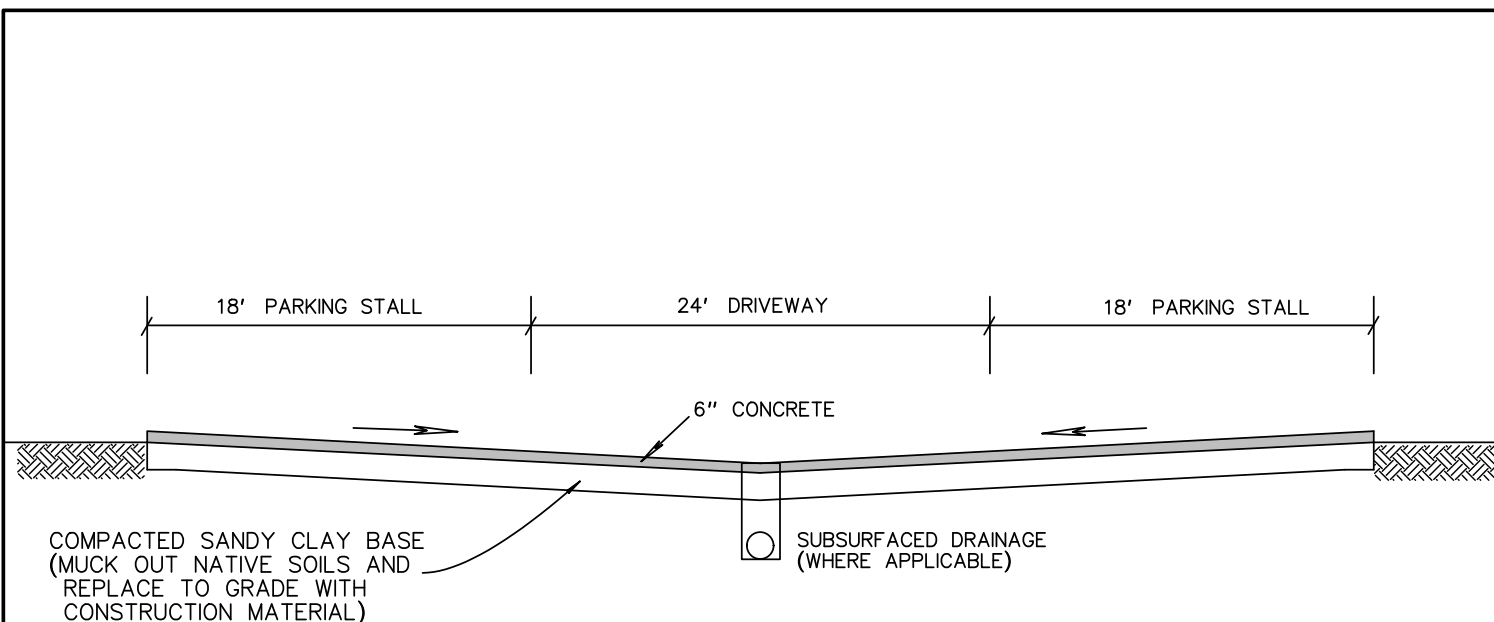


TIMBER BRANCH II,
SECTION 46, T-7-S, R-11-E
ST. TAMMANY PARISH, LA.

DRAINAGE SCHEMATIC

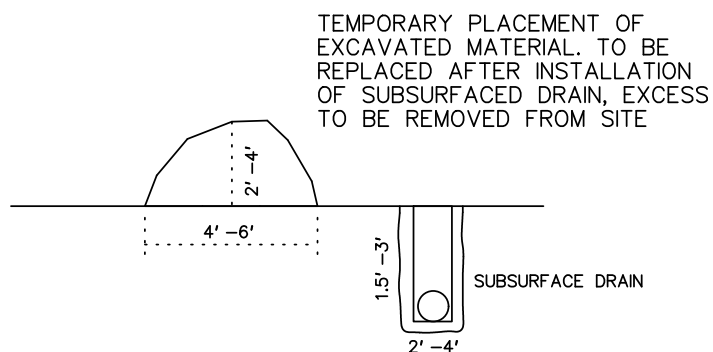
SCALE	1" = 300'	DATE	04-10-19
DRAWN	DRJ	JOB NO.	16-025
REVISIONS			





TYPICAL PARKING LOT SECTION

CONCRETE PARKING
8972 cu. yd./11.12 ac

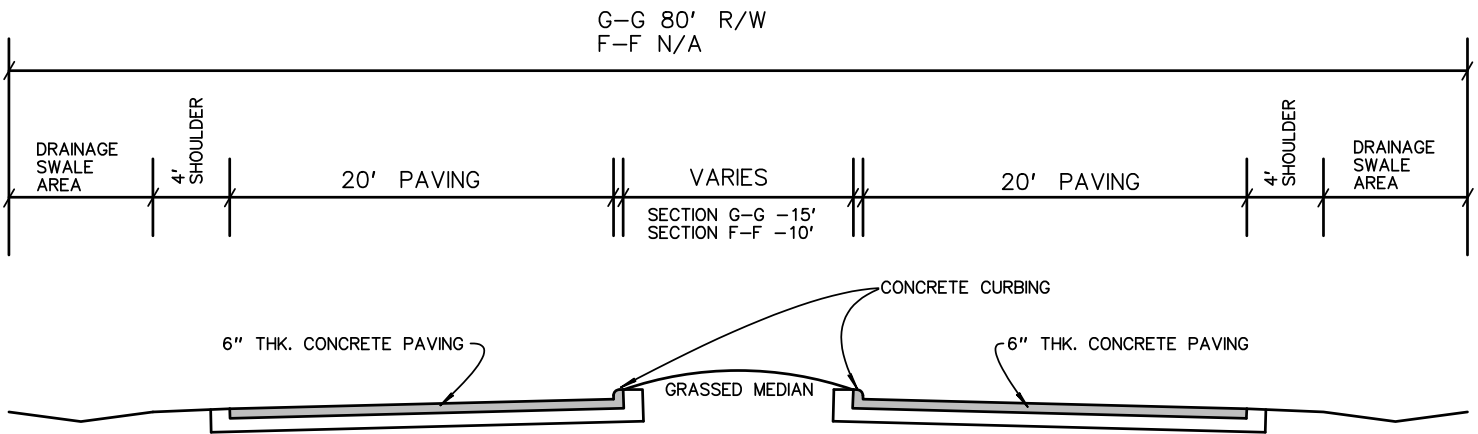


TEMPORARY EXCAVATION DETAIL
N.T.S.

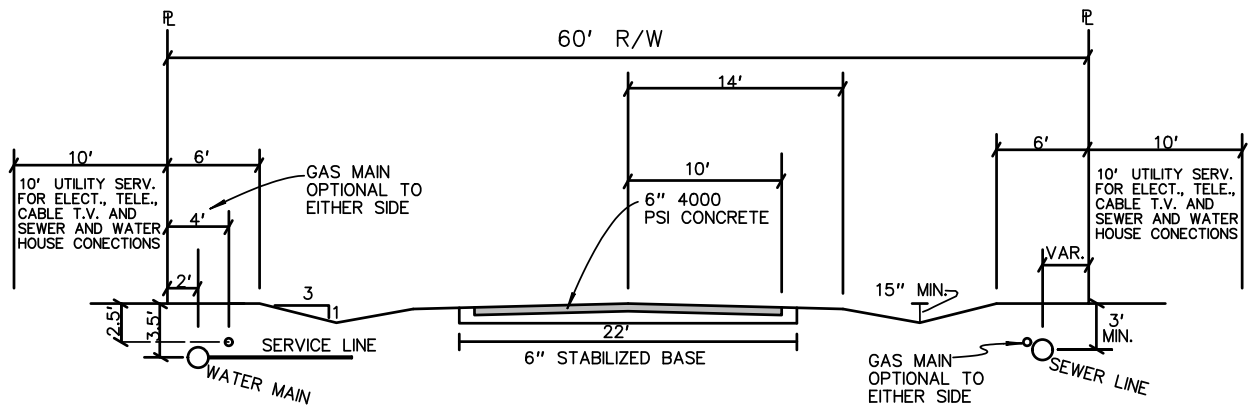
TIMBER BRANCH II
ST. TAMMANY PARISH, LA.

TYPICAL PARKING LOT SECTION

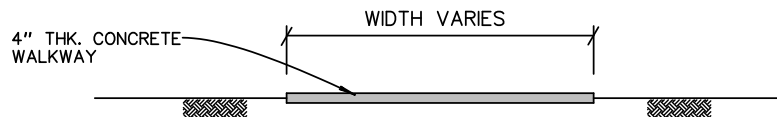
SCALE:	N.T.S.	DATE:	01-15-18
DRAWN:	DRJ	JOB NO.:	16-025
REVISED:			



BOULEVARD SECTIONS
F-F AND G-G



RESIDENTIAL AREA
STREET SECTION
H-H



WALKWAY SECTION

TIMBER BRANCH II
ST. TAMMANY PARISH, LA.

STREET/WALKWAY SECTIONS

SCALE: N.T.S. DATE: 01-26-18

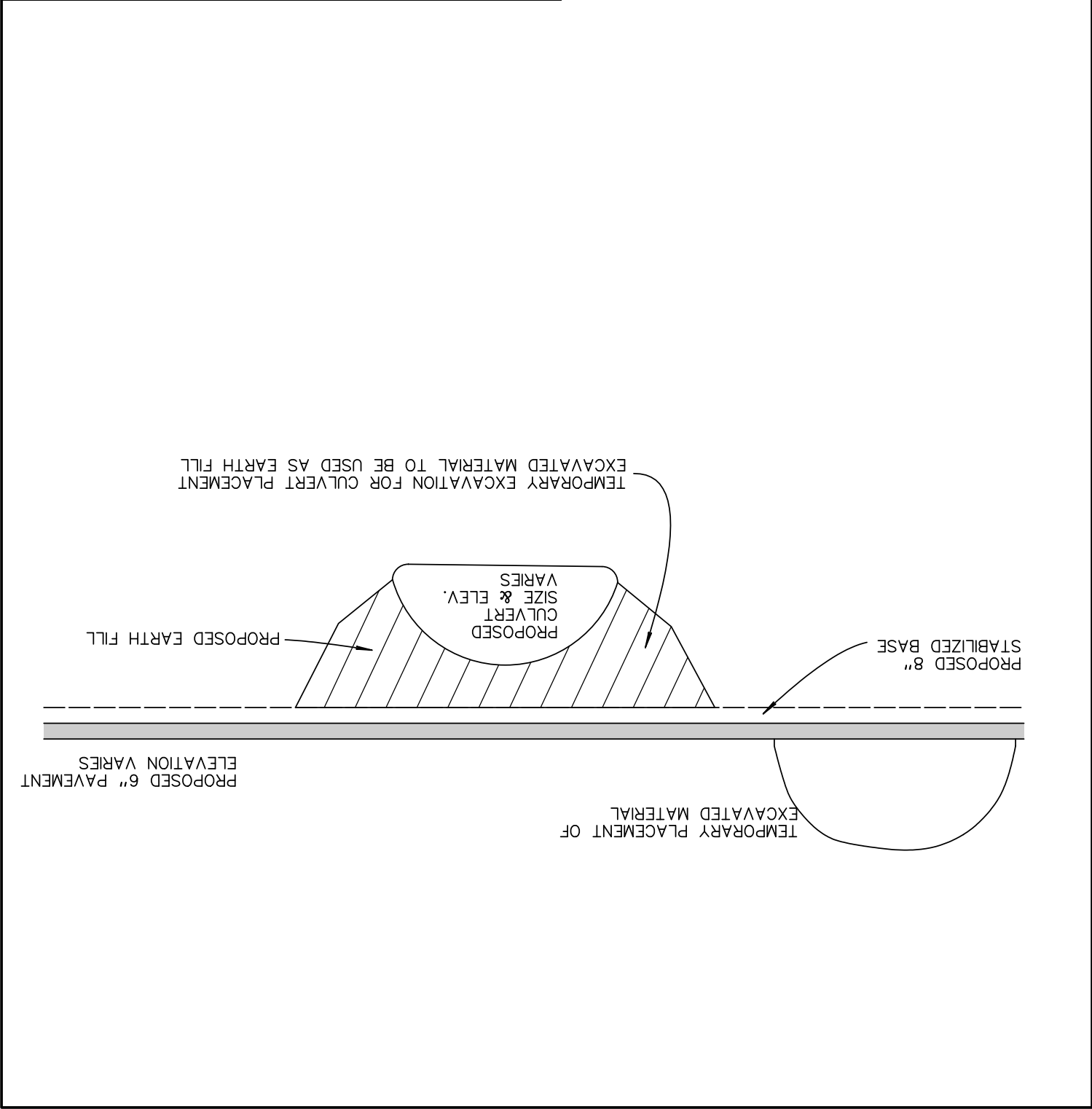
DRAWN: DRJ JOB NO.: 16-025

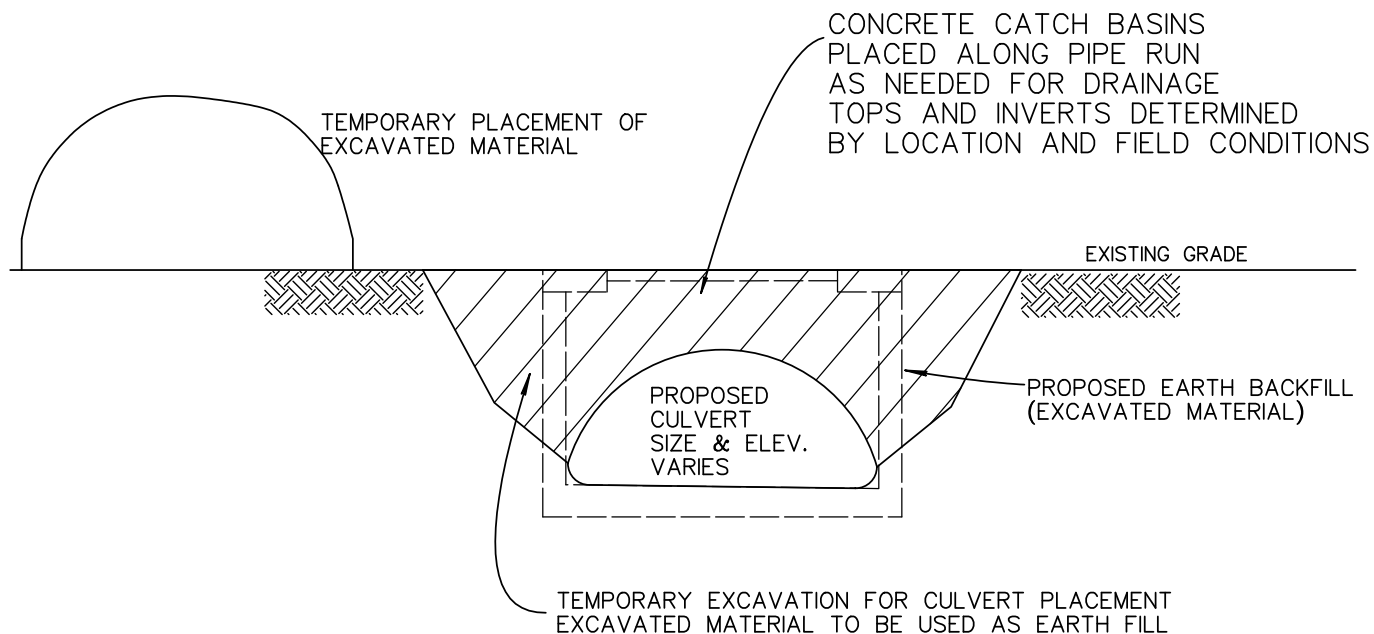
REVISED:

TIMBER BRANCH II,
SECTION 46, T-7-S, R-11-E,
ST. TAMMANY PARISH, LA.

TYPICAL CULVERT SECTION
AT ROADWAY CROSSINGS

SCALE: N.T.S.		DATE: 01-25-18
DRAWN: DRJ		JOB NO.: 16-025
REVISED:		





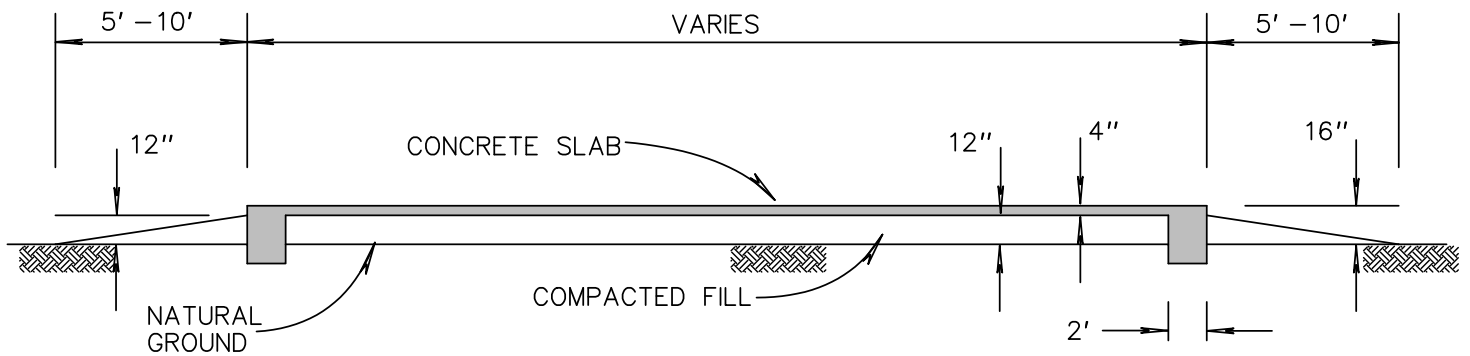
PIPE DIAMETER SCHEDULE

SECTION A-A 24"-36" (OR ARCH EQUIV.)
 SECTION B-B 36" (OR ARCH EQUIV.)
 SECTION C-C 48" (OR ARCH EQUIV.)
 SECTION D-D 24"-36" (OR ARCH EQUIV.)
 SECTION E-E 36"-48" (OR ARCH EQUIV.)

TIMBER BRANCH II
 SECTION 46, T-7-S, R-11-E,
 ST. TAMMANY PARISH, LA.

TYPICAL CULVERT SECTIONS
 A-A, B-B, C-C, D-D, E-E.

SCALE:	N.T.S.	DATE:	01-25-18
DRAWN:	DRJ	JOB NO.:	16-025
REVISED:			



FILL/CONCRETE VOLUMES

COMMERCIAL BUILDINGS
 COMPACTED FILL 1844.4 cu. yd.
 CONCRETE SLAB 7377.6 cu. yd.

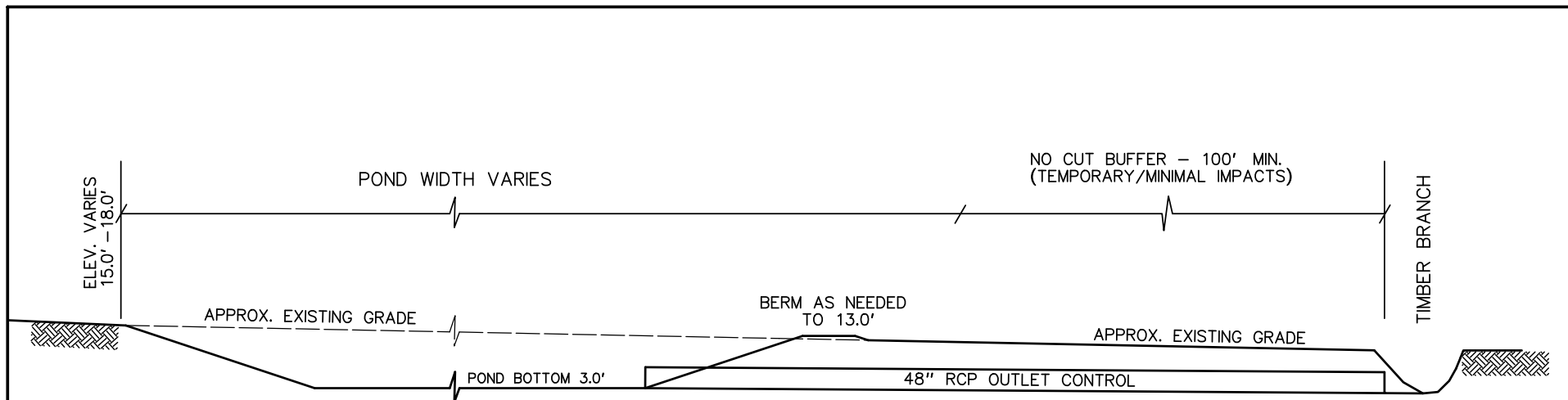
APARTMENT BUILDINGS
 COMPACTRD FILL 5376 cu. yd.
 CONCRETE SLAB 1344 cu. yd.

SINGLE FAMILY RESIDENCES (80 LOTS)
 COMPACTRD FILL 9431 cu. yd.
 CONCRETE SLAB 2347 cu. yd.

TIMBER BRANCH II,
 ST. TAMMANY PARISH, LA.

TYPICAL BUILDING SECTION VIEW

SCALE:	N.T.S.	DATE:	01-15-18
DRAWN:	DRJ	JOB NO.:	16-025
REVISED:			



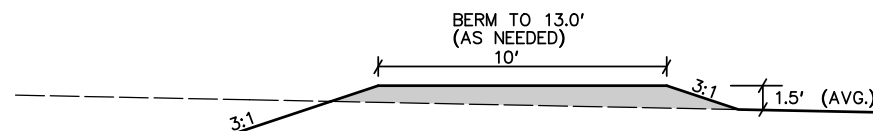
EXCAVATION VOLUME

DRY DETENTION AREA 78469 cu. yd.

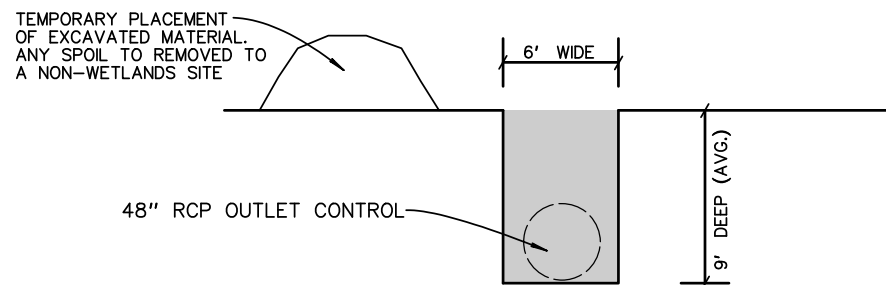
TEMPORARY CUT FOR
OUTLET DRAINAGE 240 cu. yd.

FILL VOLUME

PERIMETER BERM 1498 cu. yd.



SECTION PERIMETER BERM



SECTION TEMPORARY IMPACTS

TIMBER BRANCH II
ST. TAMMANY PARISH, LA.

POND SECTION

SCALE 1" = 30' DATE 04-10-19

DRAWN DRJ JOB NO. 16-025

REVISIONS